



— DWYER —
QUALITY HOMES

FRAMERS SPECIFICATIONS AND INFORMATION

- Please keep garage floors and any other exposed concrete free of nails/steel and HWD on a daily basis to avoid staining.
- Maximum permissible overhang of frames on slab edge is as follows;
70mm frame – 10mm
90mm frame – 15mm
Please bear this in mind when setting out as it is sometimes possible to swing the setout to ensure all frames are correctly supported. If overhangs exceed these tolerances, please advise your supervisor ASAP so that appropriate remedial work can be carried out.
- Always ensure DPC is placed under bottom plates on a concrete slab before standing frames. Fit flush with the inside of the frame so that the excess can be trimmed or folded as necessary prior to cladding/brickwork.
- Please ensure trusses that are designed to sit on load bearing walls are fully seated on the load bearing points. Sometimes trusses are made with slightly more camber than they should have and when combined with a less than perfect slab that may have, for example, a 10mm slump this can cause the trusses to float above the L/B surface. If this is the case, please install solid packers (such as window packers) before strapping down.
- **Gable ends** are to be framed out for future cladding or brickwork at Max 600mm ctrs and papered where possible.
- **Garage door** nogging requirements and jambs – refer to attached detail. Please note, some “Tilt” doors require special nogging and jamb studs (i.e HWD) – always check these with your supervisor if nominated as these generally differ greatly from sectional doors. Check that correct door jambs have been supplied before fitting – Typical brick veneer = 140mm for 70mm frames, 160mm for 90mm frames. Cut ends of jambs must be treated with Ecosal and primed.



— DWYER —
QUALITY HOMES

- **Ply Bracing** – ensure nail spacings are not exceeded and that nails are not overdriven as this will result in a frame inspection fail.
All “Double Ply” must be fixed with either 2 x 12mm rods or 1 x 16mm rod at each end of the ply bay. The engineer may also specify bolts only (not rods), in this case, the same applies – install 2 x 12mm bolts. One side of the Double Ply walls may have to left off so that services can be installed so please check for electrical/plumbing etc in these locations. If both sides can be installed, drill a neat mouse hole (with a hole saw – not a hammer) so that fixings can be inspected at time of frame inspection.
Pay close attention to the nailing pattern required on ply bracing as this has changed in recent times. The Aust. Standard has reduced the kN/metre that can be achieved with ply brace, therefore a closer nailing pattern (50mm) is now required either side of butt joints to achieve the necessary value (see detail at the back of this manual)
- **Transfer Blocks** – ensure 90x45 nogging is used where bracing panels are parallel to the trusses. These must be fixed with 2 x Type 17 14Gx75mm batten screws each end – refer to bracing detail sheet attached to all working drawings.
- Install “**Partition Brackets**” or “**Pryda Fast Fix**” screws to non-load bearing walls. Do NOT nail through ceiling battens to underside of top plate – this will fail a frame inspection.
- Check your bracing and engineering plans for possible **ceiling diaphragm bracing** utilising 30 x .8 strapping or ply. This commonly occurs when there are step outs/bulkheads and under decks and patio’s and can be easily overlooked.
- Ensure truss cyclone straps are as straight/plumb as possible when fixing to the top plates. Angled straps will usually fail a frame inspection!
- Ensure Truss Speed Brace is correctly installed and fixed to the face and underside of the top plate where possible. Detail on fixing can be easily found via the following link (also detailed later in this manual, including a QR Code)

<https://pryda.com.au/pryda-resources/>



— DWYER —
QUALITY HOMES

- Ensure Lintels are strapped at 1200 max ctrs to provide tie down continuity in addition to cyclone rods.
- **PT and Netbrace's** if specified to achieve high bracing values in short walls must be installed into a 90mm frame to provided sufficient edge clearance for fixing into the slab.
- **Building Paper** - Ensure when wrapping the frame with building paper that paper is returned into the frame openings and make sure there are sufficient fixings to prevent it from blowing off due to wind during construction. Please ensure gable ends and the like are papered to prevent weather damaging internal linings that are often installed before the outside cladding/brickwork is complete. If fire/boundary walls are applicable, ensure the correct wrap is used behind cladding – not all wraps are certified for use on fire walls.
- **Windows and doors** must be solid packed on jambs and sills (no packers on heads) and fixed with “T Nails” as a minimum – finishing guns/nails are unacceptable and will fail inspection. Ensure sliding door latch/handle locations are fully packed to avoid bounce and subsequent popping of nails.
Kitchen windows that have the benchtop running into the window are to have jambs set 905mm AFL. There should be no sill reveal in this case, please check with your supervisor if unsure about what has been supplied.
- **Corner Stacker door** heads usually require extra bracing on top of the bottom cords and sometimes have steel angle supports attached to “King Posts” designed into the trusses. These details should be supplied by the truss detailer with your layouts. The requirements vary depending on the program used to design the trusses (e.g. Pryda/MiTek etc) however, occasionally these may be overlooked. Please check your paperwork and advise your supervisor if no details have been provided for corner stackers and this will be followed up.
- **Ceiling battens** must be installed to the perimeter of ALL rooms if **Square Set** is specified to accommodate fixings at 150 ctrs.
Garages must have **full perimeter battens** installed regardless of whether cornice or square set to comply with current building codes.



— DWYER —
QUALITY HOMES

For typical cornice, ceiling battens should be fixed at 450mm max centres (no perimeter batten is required)

- **External ceilings** must have ceiling battens installed at max 300mm centres due to the higher wind pressure imposed on external ceilings. External ceilings must have a minimum drop edge of 100mm to protect the ceiling from wind driven rain. Most often this must be framed on site and may be dictated by post/pier sizes. Discuss with your supervisor prior to framing. This will most likely fall under the soffits and cladding scope, but it may affect your ceiling batten layout. Please do NOT install metal battens in the centre of hallways as downlights are almost always specified for this location. Best practice is to install a perimeter batten on both sides of the hallway and 2 x ceiling battens (for a typical hallway) in the middle leaving approx. 200mm space for D/L's
- **Barn Doors** – Barn door openings should be checked for width and height. The daylight opening should be framed the same size as the intended door i.e. 2040 x 820 door would have a framed opening of 2040 x 820 so that after gyprock is fitted and set the opening will be approx. 2030 x 800. This will allow the door to cover the opening and lower the head height for the track to be fitted (NB a standard door opening intended for a door with jambs is too high and will not work!) Nogs MUST be fitted either side of the opening and doubled up to allow optimal face fixing (2 x 70mm = 140mm) for the track and set at 2100mm AFL to the centre of the nogs for a std door and 2400mm AFL for a 2340mm door. See Barn Door installation guide later in this manual
- **Nogging for towel rails, toilet roll holders, robe hooks, handrails etc.** It is important to check for locations of all fittings and nog accordingly. Unless noted otherwise heights are as follows;
Double towel rails one above the other – 900mm and 1800mm ALF
Single Towel rail 1M AFL
Toilet Roll Holder 800mm AFL (and 800mm from back wall if space permits)
Robe Hooks 1.600mm AFL



— DWYER —
QUALITY HOMES

Nog for end fixing points of handrails and balustrades both internal and external.

- Carry out a complete **frame straighten** at time of window/doors installation.
- Check for **Ducted A/Cond** location if applicable and ensure clear space has been allowed in the truss layout and where possible provide a 2nd manhole to enable future servicing – discuss this with your supervisor.

Hi-Sets

- **Flooring** - Ensure that Particle Board flooring is fully glued and "**Screwed**" and that the correct sheet layout has been applied (staggered typically)
- Check **wet areas for step-downs** and ensure that appropriate joists have been supplied to archive this. Wet areas will usually be sheeted with compressed sheets – make sure you are familiar with the sheet layout for that manufacturer.... if in doubt, ask. See attachment at the back of this manual for more information
- **Decks** -
 - a) **Waterproof decks** - Ensure that the correct layout for sheets supplied has been followed and movement joints have been properly formed (follow the manufacturer's recommendations, if in doubt, ask for assistance)
 - b) Waterproof Decks must have min 1:100 fall i.e. if the deck is 3.0M front to back, it should have 30mm fall. Follow the link below for more info.





— DWYER —
QUALITY HOMES

256 Nicklin Way, Warana QLD 4575
P: 07 5436 7900
www.dqh.com.au
E: admin@dqh.com.au
ABN: 34 626 121 922 | QBCC: 15098788

c) The **Minimum stepdown** for a typical deck with an **N3 wind rating is 70mm**. Flashings must be installed prior to door installation with the ends turned up and sealed to prevent water from entering the dwelling. The overhanging sill should be fully supported (Hebel is a good material to use for this and can organised by your supervisor as they are usually cut to order) See attached detail for further

information

d) **Open timber decks** – Joists must be painted all round before installation and all cuts treated with Ecoseal Timber preservative or similar and primed. Once dry, these cut ends should be primed/painted prior to fixing. Tops of joists are to have “joist protector” fitted prior to fixing boards. If joist protector has not been supplied, please ask your supervisor to organise some ASAP.....do not place the decking without it! Consideration should be given to fixing methods when building open decks. If the joists “Butt” into the bearer, galvanised brackets with galv nails must be used to provide adequate shear strength. If however, it is possible to place the joists on top of the bearer, 2 x treated timber screws or 2 x galv nails skewed (drill first) through the joist into the beam is adequate and often looks much more appealing than exposed brackets.

- **Upper level** openings that have the potential to fall through must have temp barriers erected across the openings until windows and doors are fitted.



DWYER
 QUALITY HOMES

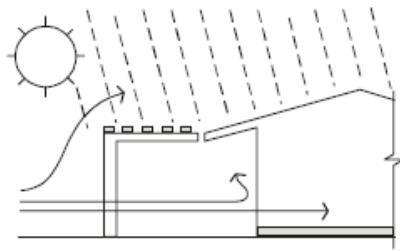
-
- **Post Notching** should be carefully considered so as not to over notch posts when placing pitching beams and the like

(i) 	No. 14 Type 17 screws (min. 35 mm penetration into receiving member)						
	2	7.7	5.5	3.9	5.5	3.9	2.8
4	15	11	7.8	11	7.8	5.7	
Bolts							
1/M10 cup-head	3.9	2.3	1.5	2.6	1.8	1.2	
1/M12 cup-head	4.4	2.7	1.8	3.0	2.2	1.5	
1/M16 cup-head	5.7	3.7	2.3	4.2	2.9	2.0	
2/M10 cup-head	7.7	4.6	2.9	5.2	3.6	2.5	
2/M12 cup-head	8.8	5.5	3.5	6.1	4.3	3.0	
2/M16 cup-head	11	7.3	4.6	8.3	5.7	4.0	
1/M10	5.7	3.8	2.5	4.3	3.6	2.1	
1/M12	7.3	4.5	2.9	5.1	3.6	2.5	
1/M16	9.5	6.1	3.8	6.9	4.8	3.3	
2/M10	11	7.6	4.9	8.6	6.1	4.1	
2/M12	15	9.1	5.8	10	7.2	5.1	
2/M16	19	12	7.6	14	9.6	6.6	

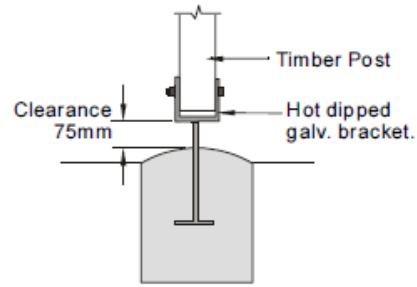


DWYER
QUALITY HOMES

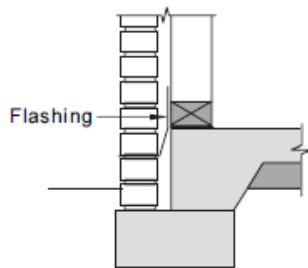
Dampcourse and Durability measures



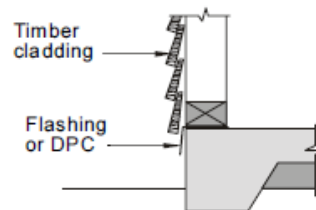
(a) Screens and pergolas
(reduce exposure and allow air circulation)



(b) Posts above-ground
(isolation from moisture and termites)



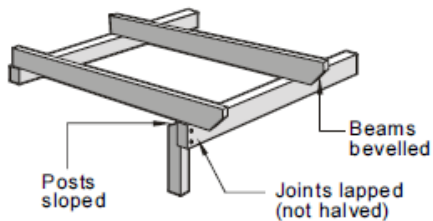
(c) Flashings or DPC (isolation from moisture)



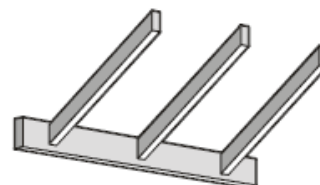
(d) Beam capping
(protecting horizontal surface and joints)



(e) Protecting end grain



(f) Reducing end grain exposure



(g) Fascias and bargeboards
(protecting end grain)

FIGURE C2 IMPROVING DURABILITY



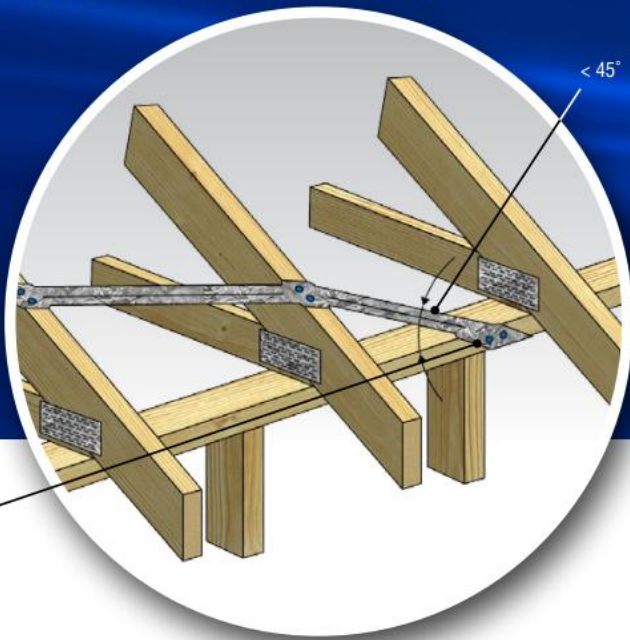
DWYER
QUALITY HOMES

256 Nicklin Way, Warana QLD 4575
P: 07 5436 7900
www.dqh.com.au
E: admin@dqh.com.au
ABN: 34 626 121 922 | QBCC: 15098788

Typical SpeedBrace fixing detail

fitted tightly between trusses using two MiTek nails to truss and three MiTek nails to top plate

HEEL END FIXING DETAIL



Bend SpeedBrace to side of top plate and under plate. Fix with two MiTek nails to side and three MiTek nails to under top plate. MiTek nails must be no closer than 10mm to the edge of the timber.

For more information about MiTek's Engineered Building Products or any other MiTek products or your nearest licensed MiTek fabricator, please call your local state office or visit: mitek.com.au



SB-R 07/15

HOME OF GANG-NAIL BUILDING SYSTEMS

creating the **advantage**

VIC (03) 8795 8888 NSW (02) 8525 8000 QLD (07) 3861 2100 SA (08) 8234 1326 WA (08) 9412 3534 New Zealand (09) 274 7109

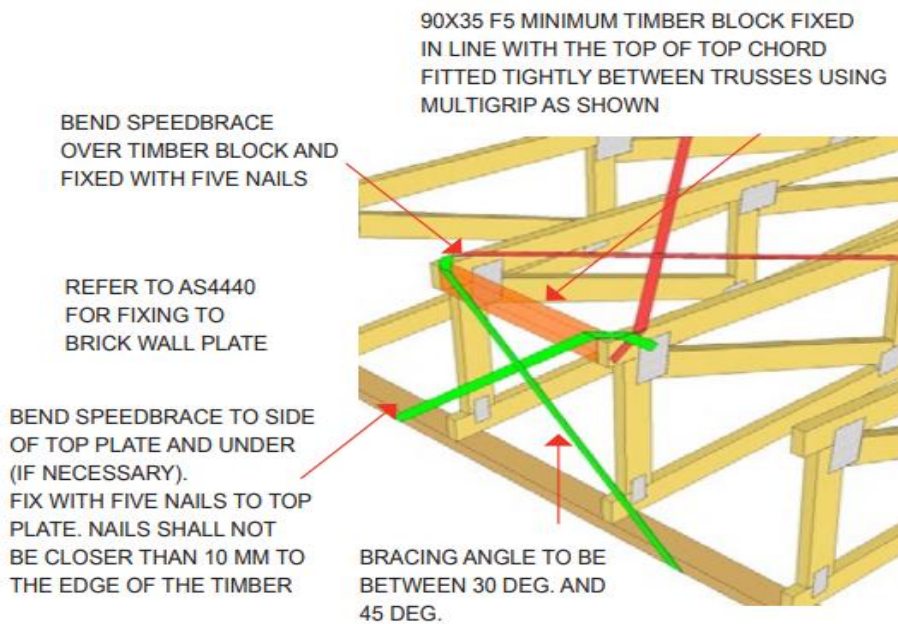
Mitek



— DWYER —
 QUALITY HOMES

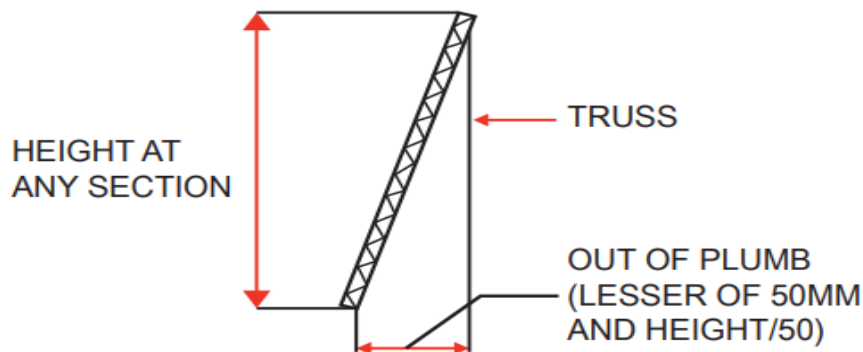
4.5.2 End Webs

All trusses with end vertical webs not intersecting with another truss, will need end web bracing similar to the top chord bracing. Diagonal bracing from the top chord to the supporting structure should be provided at each end of each run of trusses, and at intermediate anchorage points (as shown) to transfer bracing loads from roof plane to supporting wall.



FIXING DETAILS FOR ENDS OF CUT-OFF OR MONO TRUSSES TYPE ENDS

Plumb – trusses shall be installed so that no part of the truss is out of plumb by more than the smaller or height/50 or 50 mm.



These tolerances will produce a good roof line, and the performance of the trusses will deteriorate rapidly if these are exceeded, producing excess deflections and overstress in the truss.



— DWYER —
 QUALITY HOMES

Typical Cyclone Strap installation detail

CYCLONE STRAPS DATA SHEET



INSTALLATION

CYCLONE STRAPS FOR TRUSS TIE DOWN TO TOP PLATE

STEP 1



- Position the centre of the Cyclone Strap over the Truss and bend each side down at the same time, ensuring each leg is equal length.

STEP 2



- Put 2 Pryda Timber Connector nails into each leg on both sides of the Truss

STEP 3



- Wrap the two legs under the top plate and fix off with Pryda Timber connector nails per leg to suit QHS selection length and tie down requirement. MPQHS6 shown above using three Pryda Connector nails to each leg. Higher capacities can be achieved if four nails are used (MPQHS6, QHS9, QHS9/2).

STEP 4



- Fold overhanging legs over itself and flatten. Do not leave overhanging legs pass frame.

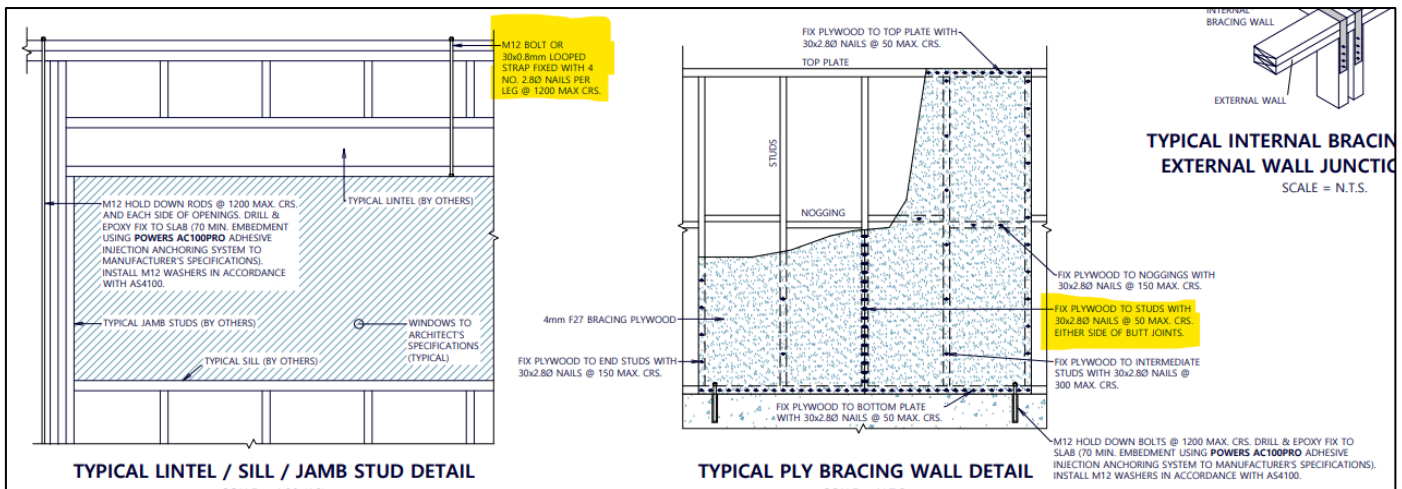
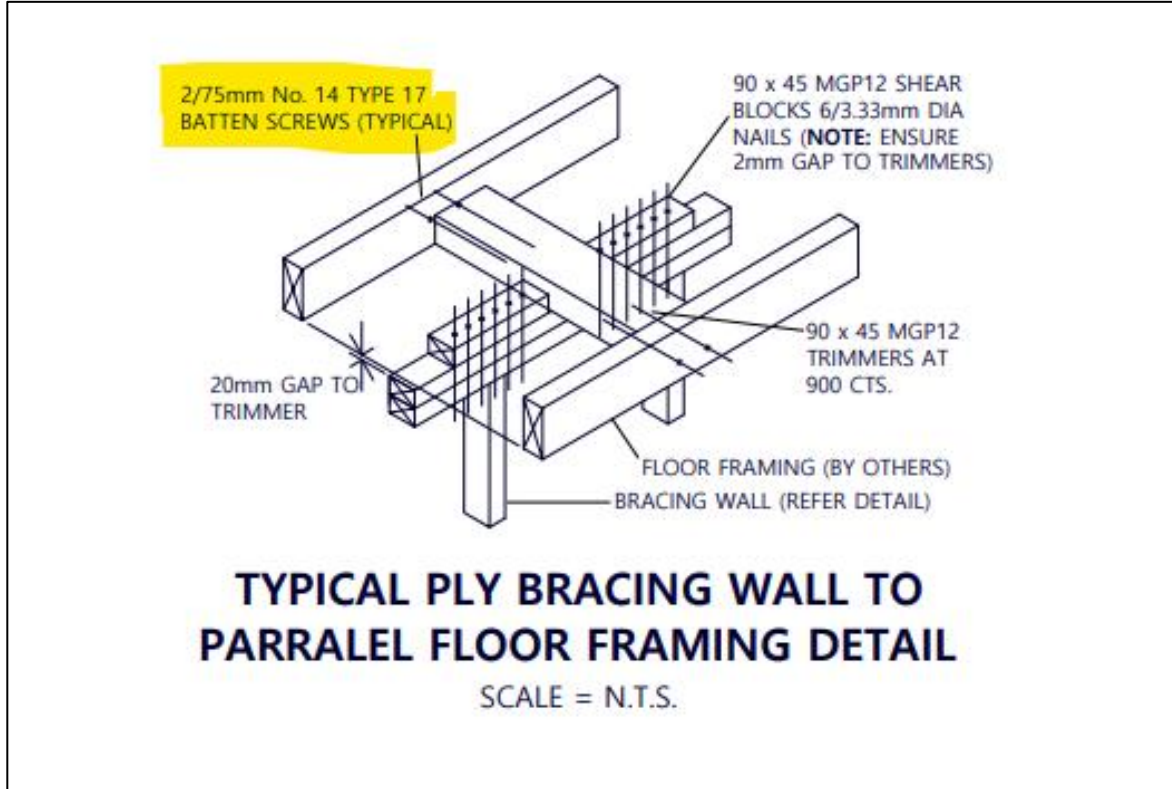
Pryda





DWYER
QUALITY HOMES

256 Nicklin Way, Warana QLD 4575
P: 07 5436 7900
www.dqh.com.au
E: admin@dqh.com.au
ABN: 34 626 121 922 | QBCC: 15098788





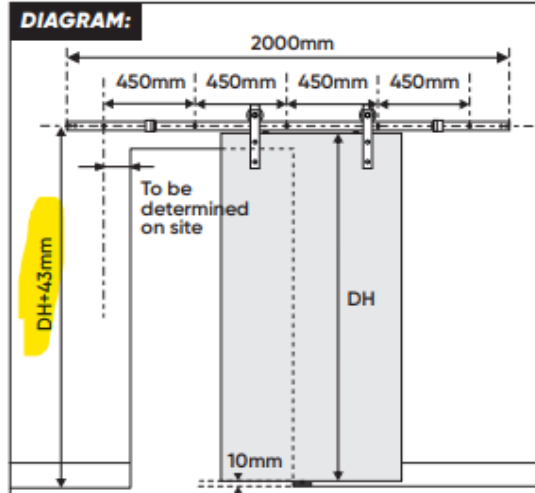
DWYER
 QUALITY HOMES

ROLLTRAK

DOOR & WINDOW SPECIALISTS

2000MM BARN DOOR TRACK SET - SIDE MOUNT

Model Number: R90310 & R90315	Tools required: Drill, tape measure, level, pencil, phillips head screwdriver, 2.5mm, 3.2mm, 6mm, 9mm & 10mm high speed steel drill bit, 8mm & 10mm masonry drill bit.
---	--



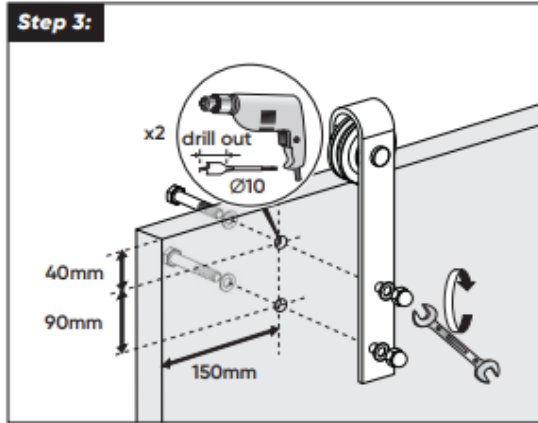
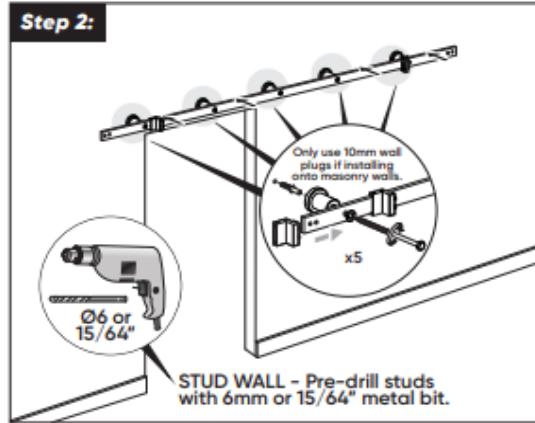
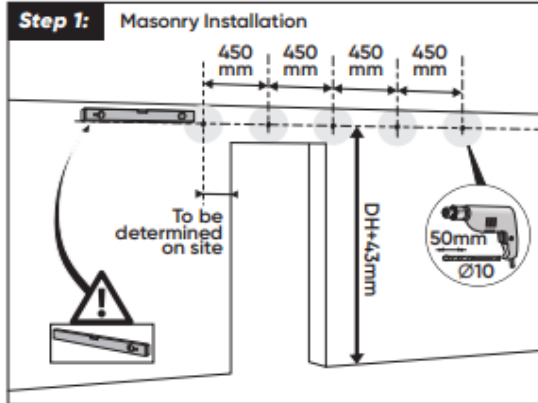
Note: The door size should be a suitable height & width to cover the opening.

CONTENTS:

- x4
- x5
- x5
- x1
- x1
- x1
- x1
- x1
- x2
- x2
- x2
- x4
- x4
- x4
- x2

IMPORTANT:
STUD WALL INSTALLATION

- The track is supplied with pre-drilled 450mm hole spacings.
- If you have a stud wall, you will need to ensure that you fix the track to the studs. This may require re-drilling the track.
- Screwing into gyproc or cladding may not support the weight of the door.
- Refer to *Stud Wall Installation* page, if you have a stud wall.



Warranty:

Any claim under this warranty must be made within 12 months of the date of purchase of the product. To make a claim under this warranty, take the product (with proof of purchase) to any Bunnings store (for AUS customers see www.bunnings.com.au and for NZ customers see www.bunnings.co.nz for store locations). Rolltrak bears reasonable, direct expenses of claiming under the warranty. You may submit details and proof of purchase to our support centre for consideration. The warranty covers manufacturer defects in materials, workmanship and finish under normal use. This warranty is provided in addition to other rights and remedies you may have under law. Our goods come with guarantees that cannot be excluded under the Australian consumer law or Consumer Guarantees Act 1993 (NZ). You are entitled to a replacement or refund for a major failure and compensation for any other reasonably foreseeable loss or damage. You are also entitled to have the goods repaired or replaced if the goods fail to be of acceptable quality and the failure does not amount to a major failure. This warranty excludes damage resulting from product misuse or product neglect, any modifications, additions or alterations to the product. Additions or modifications can compromise the structure and safety of the product. The warranty covers domestic use only and does not apply to commercial applications. This warranty is given by Rolltrak, ABN 61 623 946 106, 25-30 Australand Drive, Bierrievie QLD 4117, 1800 623 203, Email: support@rolltrak.com.au. Products sold in New Zealand are imported by Bunnings New Zealand. Rolltrak is a trademark. © Rolltrak Spares Pty Ltd. Suitable for model number R90310 & R90315.



— DWYER —
QUALITY HOMES

256 Nicklin Way, Warana QLD 4575
P: 07 5436 7900
www.dqh.com.au
E: admin@dqh.com.au
ABN: 34 626 121 922 | QBCC: 15098788

Barn Door Installation Guide





DWYER
QUALITY HOMES

256 Nicklin Way, Warana QLD 4575
P: 07 5436 7900
www.dqh.com.au
E: admin@dqh.com.au
ABN: 34 626 121 922 | QBCC: 15098788



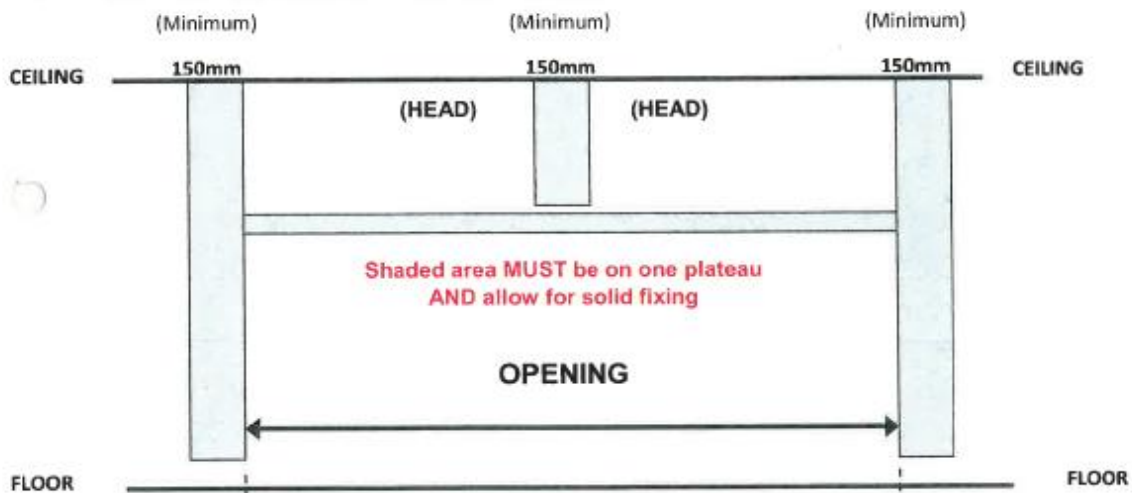
DOORS UP TO 2440

IMPORTANT

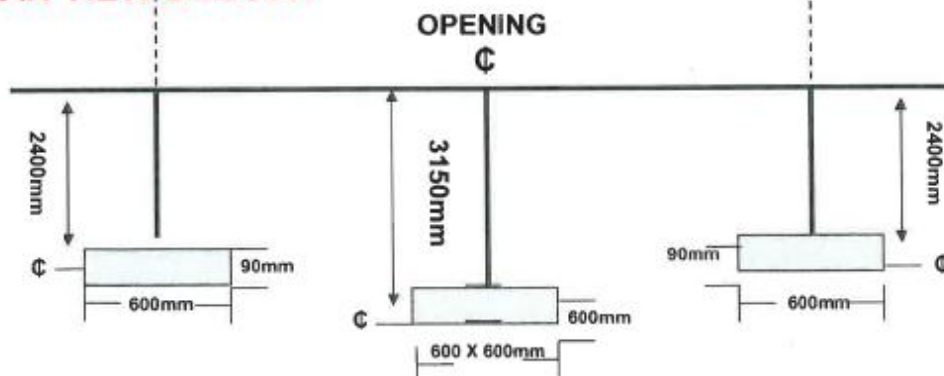
Please ensure all Builders & Supervisors are provided with a copy of this nog diagram to ensure openings are constructed with the necessary fixing points. Should insufficient fixings be available, Nog charges may apply. If we are called to install a job and there are insufficient fixings in place, a futile trip

“NOG” PLAN

PLEASE FOLLOW DIAGRAM TO ALLOW FOR PROPER INSTALLATION
FRONT WALL ELEVATION VIEW:



PLAN VIEW BELOW:



PLEASE NOTE:

- Above for standard openings up to 2440mm in height.
- Power point for automatic opener to be located at 3700mm back from centre of opening for doors up to 2440mm in height.
- Minimum Headroom – 220mm above door height
- Standard Headroom – 290mm

File path: BestDoors (P:) – GARAGE DOOR REQUIREMENTS



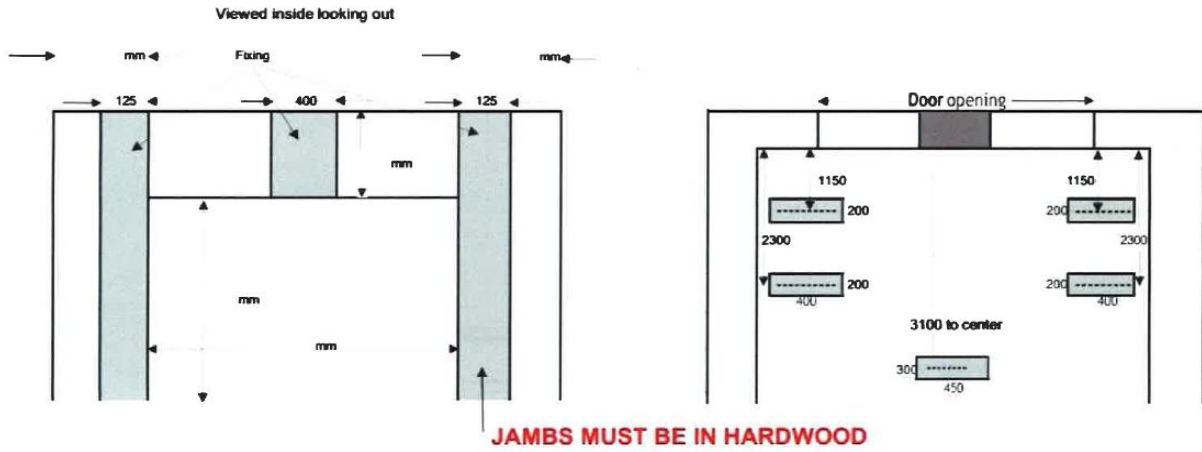
DWYER
QUALITY HOMES

256 Nicklin Way, Warana QLD 4575
P: 07 5436 7900
www.dqh.com.au
E: admin@dqh.com.au
ABN: 34 626 121 922 | QBCC: 15098788

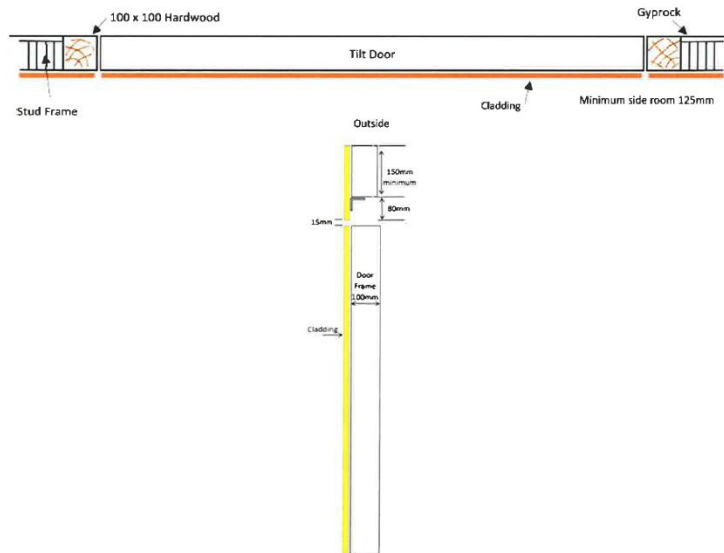


Hulk Hardware Tilt door Fittings up to 350kg

Fittings detail



Door Profile





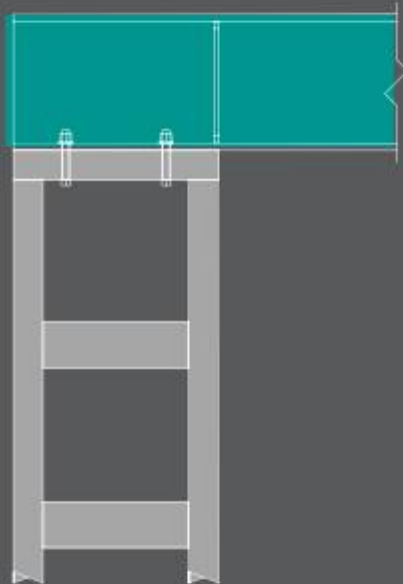
DWYER
QUALITY HOMES

256 Nicklin Way, Warana QLD 4575
P: 07 5436 7900
www.dqh.com.au
E: admin@dqh.com.au
ABN: 34 626 121 922 | QBCC: 15098788

NETBRACE®

LATERAL WALL BRACING

COLUMN OPTION



STUD WALL FRAMING

BRICKWORK



NETWORK
STEEL



For pricing and availability or to order, visit our website

NETWORKSTEEL.COM.AU



— DWYER —
 QUALITY HOMES

NETBRACE®

LATERAL WALL BRACING

ORDER CODE	WALL HEIGHT (MM)	BRACE HEIGHT (MM)	NBR WIDTH (MM)	LATERAL BRACING CAPACITY	LOAD BEARING CAPACITY
NBR24-350	2440	2400	350	8.7 kN	100 kN
NBR24-450	2440	2400	450	11.1 kN	100 kN
NBR24-600	2440	2400	600	12.5 kN	100 kN
NBR255-350	2590	2550	350	7.5 kN	100 kN
NBR255-450	2590	2550	450	9.3 kN	100 kN
NBR255-600	2590	2550	600	11.4 kN	100 kN
NBR27-350	2740	2700	350	6.9 kN	100 kN
NBR27-450	2740	2700	450	7.3 kN	100 kN
NBR27-600	2740	2700	600	8.1 kN	100 kN

NOTE: New Netbrace® Capacities based on AS 4100:2020 - Steel Structures & AS 5216:2021 Appendix A - Testing and assessment of fasteners

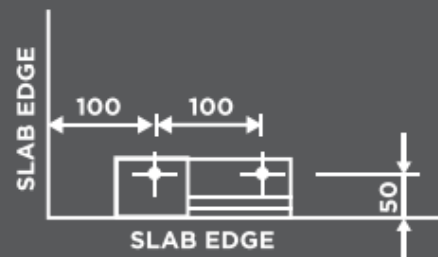
Load Bearing Capacity (Upper Floor & Roof Across Width of Brace)

GENERAL NOTES:

- Available to suit standard 2440, 2590 & 2740 ceiling heights.
Custom sizes available on request.
- All Loads quoted are Ultimate Limit Stage - Per **NETBRACE®** Frame
- NETBRACE®** Serviceability deflection Limits Height/ 250 or 10mm Max. Lateral Deflection
- NETBRACE®** capable of co-existing loads (refer to load bearing capacity table)

INSTALLATION NOTES:

- In order to achieve compliance – Installer must use: 4 x Chemical Anchors - Ramset 502 (8.8)
M16 - 220mm minimum embedment or approved equivalent
- In order to achieve compliance – Installer must ensure minimum stud anchor edge distances to slab - Refer to DIAGRAM ONE.
- Stud frames and top plates to be fixed to the **NETBRACE®** in accordance with good building practices.
- To be concealed within wall cavity, protected from elements.



NETWORKSTEEL.COM.AU



DWYER
QUALITY HOMES

256 Nicklin Way, Warana QLD 4575
P: 07 5436 7900
 www.dqh.com.au
E: admin@dqh.com.au
 ABN: 34 626 121 922 | QBCC: 15098788

Tilling Timber Pty Ltd



Head office	Sydney	Brisbane	Perth	Adelaide
31-45 Orchard Street Kilsyth Vic 3137	109 Kurrajong Avenue Mt. Druitt NSW 2770	84 Magnesium Drive Crestmead QLD 4132	10 Carwright Drive Forrestdale WA 6112	5-9 Woomera Avenue Edinburgh SA 5111
03 9725 0222 sales@tilling.com.au	02 9677 2600 nswsales@tilling.com.au	07 3440 5400 qldsales@tilling.com.au	08 9399 1609 wasales@tilling.com.au	08 8345 1966 sacales@tilling.com.au
SmartFrame Design Centre				
1300 668 690 techsupport@tilling.com.au				

SmartJoist Installation Guide



General

Jobsite handling and storage, erection procedure and erection bracing are the responsibility of the installer. Careful review of this installation guide, project plans and joist layout drawings (where supplied) should be undertaken prior to the installation of the joists. The manufacturer's warranty applies only to properly installed undamaged joists, adequately protected from the weather in the completed project.



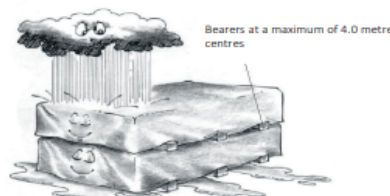
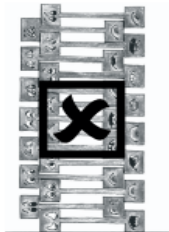
DO NOT ALLOW WORKERS OR LOADS ON SMARTJOISTS UNTIL ALL BLOCKING, HANGERS, RIM JOISTS, NAILING AND TEMPORARY BRACING ARE INSTALLED AS SPECIFIED. ACCIDENTS CAN BE AVOIDED UNDER NORMAL CONDITIONS BY FOLLOWING THESE GUIDELINES:

1. Brace each joist as it is erected. Joists must be nailed to supports and all hangers, blocking, rim joists. X - bridging at supports must be completely installed and properly nailed. (see general notes - page 5)
2. Brace the ends of cantilevers (overhangs) with closure panels, rim joist or x - bridging (see general notes - page 5)
3. Lateral brace the top flange of each joist, to prevent side-ways buckling or rollover which may occur under light construction loads, such as a worker and/or a layer of un-nailed sheathing. Fully installed permanent sheathing or temporary struts to the top flange of each joist (see 'typical SmartJoist floor framing - page 6) can accomplish lateral bracing.
4. Temporary struts must be nailed to a lateral restraint at the end of bay such as a braced wall or temporary (or permanent) sheathing nailed to the first 1200 mm of the joist at the end of the bay (see typical floor framing - page 6)
5. Permanent sheathing must be completely installed and properly nailed before additional loads can be placed on the system.
6. The integrity and safe use of these products can be seriously impaired if they are damaged. Do not install any damaged products. Contact your Tilling representative or the Tech Support Customer Helpline on 1300 668 690 if any product damage is noted.

Handling and storage of SmartJoists



SmartJoists should be stacked in the upright position to avoid any damage during handling or storage.



Use bearers to keep stacked material away from damp surfaces. align bearers vertically



depth of a stud to accept full length anchor rods. Where the groove exceeds this dimension, the remaining net breadth and depth of the stud shall not be less than the minimum size required.

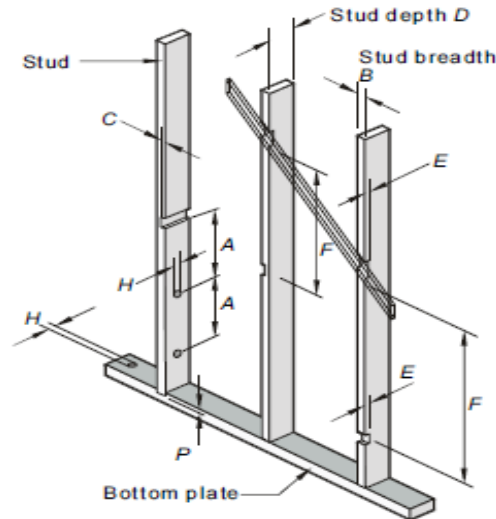


FIGURE 6.4 NOTCHING OF WALL STUDS

TABLE 6.1
HOLES AND NOTCHES IN STUDS AND PLATES

Symbol	Description	Limits	
		Notched	Not notched
<i>A</i>	Distance between holes and/or notches in stud breadth	Min. $3D$	Min. $3D$
<i>H</i>	Hole diameter (studs and plates)	Max. 25 mm (wide face only)	Max. 25 mm (wide face only)
<i>C</i>	Notch into stud breadth	Max. 10 mm	Max. 10 mm
<i>E</i>	Notch into stud depth	Max. 20 mm (for diagonal cut in bracing only) (see Notes 1 and 2)	Not permitted (see Note 1)
<i>F</i>	Distance between notches in stud depth	Min. $12B$	N/A
<i>P</i>	Trenches in plates	3 mm max.	

NOTES:

- 1 A horizontal line of notches up to 25 mm may be provided for the installation of baths.
- 2 Except as permitted for diagonal cut in bracing, notches up to 20 mm may occur in every fifth individual stud.
- 3 For additional jamb stud allowances, see also Figure 6.5.
- 4 Top and bottom plates in internal non-loadbearing and non-bracing walls may be discontinuous up to 60 mm (cut or drilled) to permit installation of services provided that, at the discontinuity, the plates are trimmed or otherwise reinforced either side of the discontinuity to maintain the lateral and longitudinal integrity of the wall.



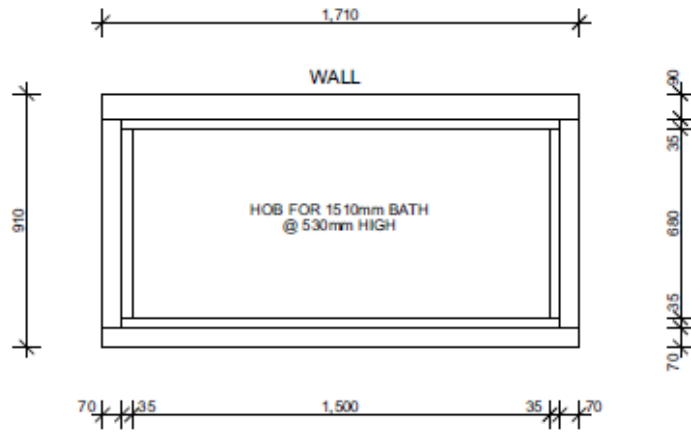
DWYER
QUALITY HOMES

256 Nicklin Way, Warana QLD 4575
P: 07 5436 7900
www.dqh.com.au
E: admin@dqh.com.au
ABN: 34 626 121 922 | QBCC: 15098788

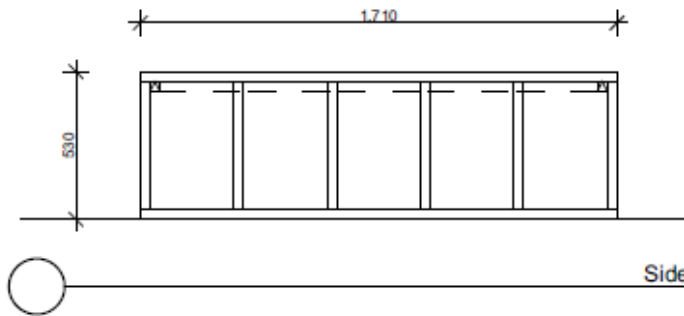
1510mm STD BATH
HOB @ 530 HIGH

FRAME CUTTING
LIST

- 1 x 90x35 @ 1710mm
- 1 x 70x35 @ 1710mm
- 1 x 90x35 @ 750mm
- 1 x 70x35 @ 750mm
- 2 x 70x35 @ 1545mm
- 2 x 70x35 @ 680mm
- UPRIGHTS @ 460mm



Plan View
1:20

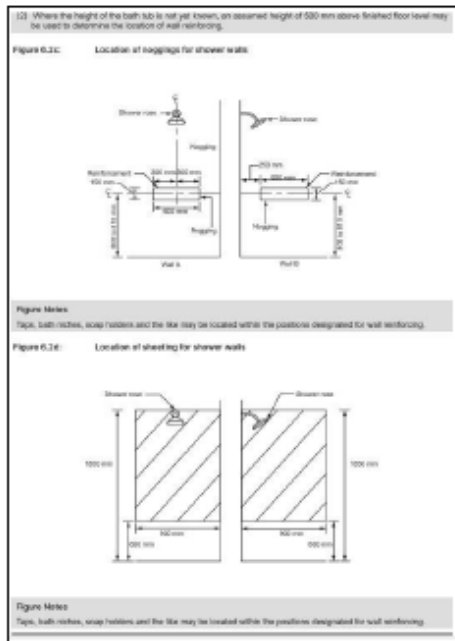


Side View
1:20

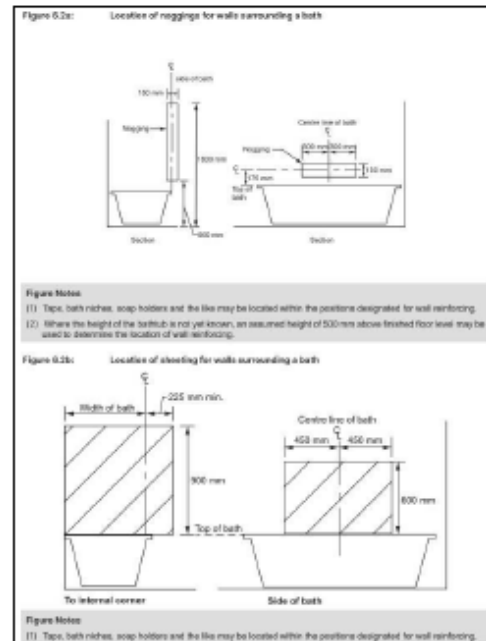


DWYER
QUALITY HOMES

256 Nicklin Way, Warana QLD 4575
P: 07 5436 7900
www.dqh.com.au
E: admin@dqh.com.au
ABN: 34 626 121 922 | QBCC: 15098788



Shower Wall Reinforcing Requirements



Bath Wall Reinforcing Requirements

REINFORCEMENT OF BATHROOM & SANITARY COMPARTMENT WALLS - LIVABLE HOUSING DESIGN (PART 6)

6.1 LOCATION

REINFORCING TO BE PROVIDED TO NOMINATED WC, SHOWER AND BATH (OTHER THAN A FREESTANDING BATH WHERE THE BATH IS LOCATED IN A ROOM THAT ALSO CONTAINS A NOMINATED SHOWER).

A BATH WITH ONLY ONE ADJOINING WALL NEED ONLY HAVE REINFORCING PROVIDED IN THE ADJOINING WALL.

REINFORCING NOT REQUIRED IF THE WALLS OF THE ROOM ARE CONSTRUCTED ON CONCRETE, MASONRY OR ANOTHER MATERIAL CAPABLE OF SUPPORTING GRABRAILS WITHOUT ADDITIONAL REINFORCEMENT.

6.2 CONSTRUCTION

(1) REINFORCING CONSTRUCTED IN ACCORDANCE WITH

(A) FIGURES 6.2A OR 6.2B FOR WALLS SURROUNDING A BATH

(B) FIGURES 6.2C OR 6.2D FOR SHOWER WALLS

(C) FIGURES 6.2E FOR A WALL ADJACENT TO AND WITHIN 460mm OF THE CENTRELINE OF A TOILET PAN

(D) FIGURE 6.2F OR 6.2G FOR A WALL BEHIND A TOILET PAN WHERE A WALL DESCRIBED IN (C) IS NOT PROVIDED OR A WINDOW SILL OR A DOOR ENCROACHES ON THE AREA REQUIRED TO BE PROVIDED WITH REINFORCING OR WHERE THE TOILET PAN IS NOT PROVIDED IN A CORNER OF THE BATHROOM.

(2) REINFORCING NEED ONLY BE PROVIDED ACROSS THE AVAILABLE WIDTH OF THE WALL WHERE A BATH IS LOCATED -

(A) IS NARROWER THAN THE WIDTH OF THE AREA REQUIRED TO BE PROVIDED WITH REINFORCING; OR

(B) TERMINATES AT A WINDOW SILL LOWER THAN THE HEIGHT OR THE AREA REQUIRED TO BE PROVIDED WITH REINFORCING.

(3) REINFORCING REQUIRED BY (1) MUST BE CONSTRUCTED USING ONE OF THE FOLLOWING MATERIALS:

(A) A MINIMUM OF 12mm THICK STRUCTURAL GRADE PLYWOOD, OR SIMILAR.

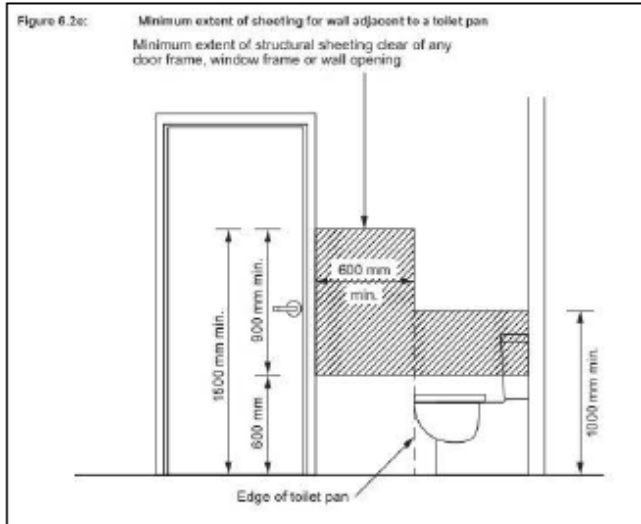
(B) TIMBER NOGGINGS WITH A MINIMUM THICKNESS OF 25mm.

(C) LIGHT GAUGE STEEL FRAMING NOGGINGS OR METAL PLATE IN ACCORDANCE WITH THE NASH STANDARD.

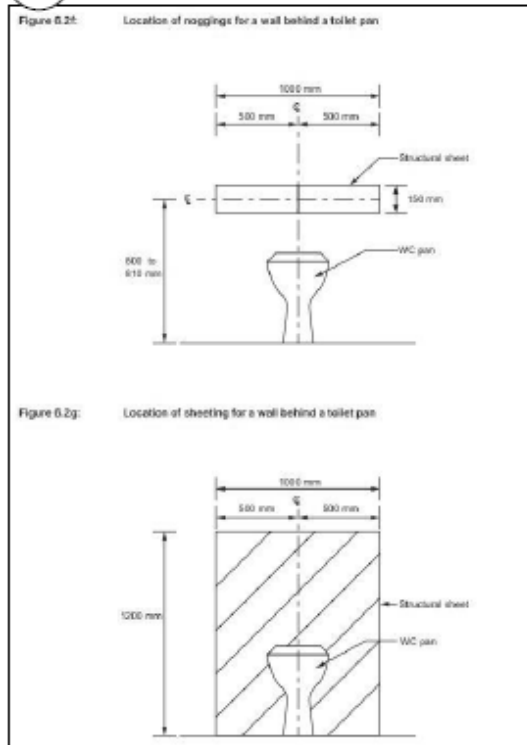


DWYER
QUALITY HOMES

256 Nicklin Way, Warana QLD 4575
P: 07 5436 7900
www.dqh.com.au
E: admin@dqh.com.au
ABN: 34 626 121 922 | QBCC: 15098788



WC Side Wall Reinforcing Requirements



WC Rear Wall Reinforcing Requirements

REINFORCEMENT OF BATHROOM & SANITARY COMPARTMENT WALLS - LIVABLE HOUSING DESIGN (PART 6)

6.1 LOCATION

REINFORCING TO BE PROVIDED TO NOMINATED WC, SHOWER AND BATH (OTHER THAN A FREE STANDING BATH WHERE THE BATH IS LOCATED IN A ROOM THAT ALSO CONTAINS A NOMINATED SHOWER).

A BATH WITH ONLY ONE ADJOINING WALL NEED ONLY HAVE REINFORCING PROVIDED IN THE ADJOINING WALL.

REINFORCING NOT REQUIRED IF THE WALLS OF THE ROOM ARE CONSTRUCTED ON CONCRETE, MASONRY OR ANOTHER MATERIAL CAPABLE OF SUPPORTING GRABRAILS WITHOUT ADDITIONAL REINFORCEMENT.

6.2 CONSTRUCTION

(1) REINFORCING CONSTRUCTED IN ACCORDANCE WITH

(A) FIGURES 6.2A OR 6.2B FOR WALLS SURROUNDING A BATH

(B) FIGURES 6.2C OR 6.2D FOR SHOWER WALLS

(C) FIGURES 6.2E FOR A WALL ADJACENT TO AND WITHIN 480mm OF THE CENTRELINE OF A TOILET PAN

(D) FIGURE 6.2F OR 6.2G FOR A WALL BEHIND A TOILET PAN WHERE A WALL DESCRIBED IN (C) IS NOT PROVIDED OR A WINDOW SILL OR A DOOR ENCROACHES ON THE AREA REQUIRED TO BE PROVIDED WITH REINFORCING OR WHERE THE TOILET PAN IS NOT PROVIDED IN A CORNER OF THE BATHROOM.

(2) REINFORCING NEED ONLY BE PROVIDED ACROSS THE AVAILABLE WIDTH OF THE WALL WHERE A BATH IS LOCATED -

(A) IS NARROWER THAN THE WIDTH OF THE AREA

REQUIRED TO BE PROVIDED WITH REINFORCING, OR

(B) TERMINATES AT A WINDOW SILL LOWER THAN THE

HEIGHT OR THE AREA REQUIRED TO BE PROVIDED WITH

REINFORCING.

(3) REINFORCING REQUIRED BY (1) MUST BE CONSTRUCTED USING ONE OF THE FOLLOWING MATERIALS:

(A) A MINIMUM OF 12mm THICK STRUCTURAL GRADE

PLYWOOD, OR SIMILAR.

(B) TIMBER NOGGINGS WITH A MINIMUM THICKNESS OF

25mm.

(C) LIGHT GAUGE STEEL FRAMING NOGGINGS OR METAL

PLATE IN ACCORDANCE WITH THE NASH STANDARD.



DWYER
QUALITY HOMES

256 Nicklin Way, Warana QLD 4575
P: 07 5436 7900
www.dqh.com.au
E: admin@dqh.com.au
ABN: 34 626 121 922 | QBCC: 15098788



— DWYER —
QUALITY HOMES

256 Nicklin Way, Warana QLD 4575
P: 07 5436 7900
www.dqh.com.au
E: admin@dqh.com.au
ABN: 34 626 121 922 | QBCC: 15098788

Frame Inspection Checklist

- Safety Plan in meter box
- Check frame plates for excessive overhang (15mm max for 90mm frame, 10mm max for 70mm frame)
- Check every bracing panel for type and length. Confirm rods, bolts, sizes and number specified. Pay particular attention to 16mm rods and double 12mm rods specified for double ply. Check nailing patterns and ensure nails are not penetrating the surface excessively.
- Transfer blocks have been correctly installed and 2 x batten screws applied to each end as detailed.
- Ensure sufficient partition brackets have been installed on non-loadbearing walls, generally 1.8M max ctrs – fixing to ceiling battens is not permitted!
- Check all wall plates located near floor rebates are fully grouted under if rebates are oversized and plates are overhanging.
- Steel posts/portals etc are fully grouted under plates and correct fixings have been used (both size and number)
- Timber post supports are correctly supplied and that correct bolts have been used.
- Metal battens installed at correct centres - 450mm ctrs for house generally, 300mm ctrs for external patios. Battens double nailed at every truss. Square set areas require fixings at 150mm min so always require a full perimeter batten (as does the garage)
- Panel lift door nogs in place and flush with ceiling battens. If steel beam over door, ensure solid blocks are provided for fixing of door.
- Check all nogs for bathroom/WC fixtures and future handrails have been correctly installed. Check “Livable Housing” blocking has been achieved if applicable.



— DWYER —
QUALITY HOMES

- Check for bulkheads if required – compare floor plans to joinery details to ensure they are the same.
- Check niches (shower and feature niches) for correct size and height etc
- Cyclone ties correctly installed (usually 4 x nails to each leg and fixed onto lintels where possible)
- Speed brace installed as per truss layout (and any additional cross bracing sometimes specified by engineer)
- Check for any PT bracing and ensure these are installed into 90mm walls to achieve edge clearance (and now using 20mm hold down bolts)
- Check for Barn doors – framed opening's correct size and nogs in place both sides and at correct height.
- Check general door openings are correct and as per plan.
- Check window installation to ensure packing and fixings are adequate (T nails min – **not** fixout nails) pay particular attention to packers at latch locations to prevent “bounce” and popping nails)
- Paper installed correctly and wrapped inside window frame openings.

Hi-Sets

- Check that flooring is glued and screwed (not nailed) and that correct sheet layout has been applied.
- Check for any step-downs that may have been specified in wet areas etc.
- Check floor system has been installed as per manufacturer's layout i.e., Joist centres, floor beams correctly supported and cambered.
- Decks –
 - a) Check that correct sheet layout has been followed with movement joints properly formed and located and that correct product has been delivered.
 - b) Check that deck has min 1:100 fall
 - c) Ensure floor sheets overhang min 30mm past intended lining on face of deck to form drip edge



256 Nicklin Way, Warana QLD 4575

P: 07 5436 7900

www.dqh.com.au

E: admin@dqh.com.au

ABN: 34 626 121 922 | QBCC: 15098788

— DWYER —
QUALITY HOMES

- d) Ensure door opening is flashed correctly before door is installed. Pack walls out if cladding is specified and fully support the door sill
- e) Solid nog for handrail fixings as required.
- Void protection in place ASAP and ensure safe access is provided to upper level at all times.
- Fall protection installed around open decks and window/door openings.
- Check entire frame for straight and plumb.
- Check garage floor is free from nails, HWD etc that could potentially stain the floor